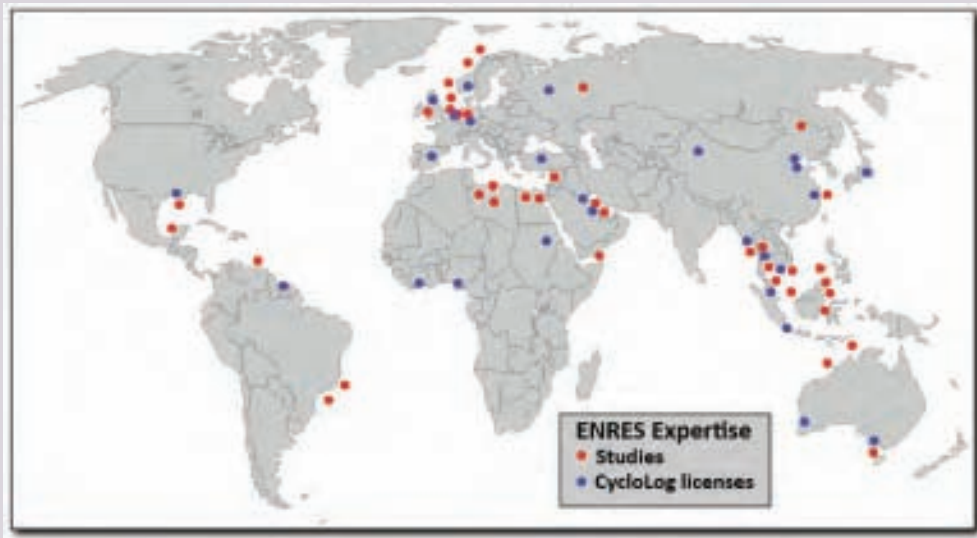




solutions in petroleum geoscience

Petroleum Geological Software

ENRES Expertise in the World



CycloLog

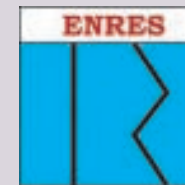
WIRELINE LOG ANALYSIS

The Most Complete Wireline Log Analysis Tool for Petroleum Geologists

CycloLog *RTS*

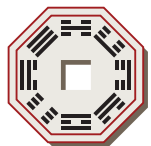
REAL TIME STRATIGRAPHY

Unique Software for Well Placement



INPEFA Log Transform Plugin in Petrel

ENRES
INTERNATIONAL



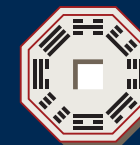
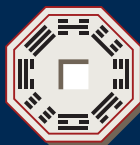
ENRES INTERNATIONAL

Euclideslaan 201
3584 BS Utrecht
Netherlands
E: sales@enresinternational.com
W: www.enresinternational.com



*CycloLog is mark of ENRES
INPEFA is mark of ENRES*

Petrel is mark of Schlumberger



CycloLog

WIRESLINE LOG ANALYSIS

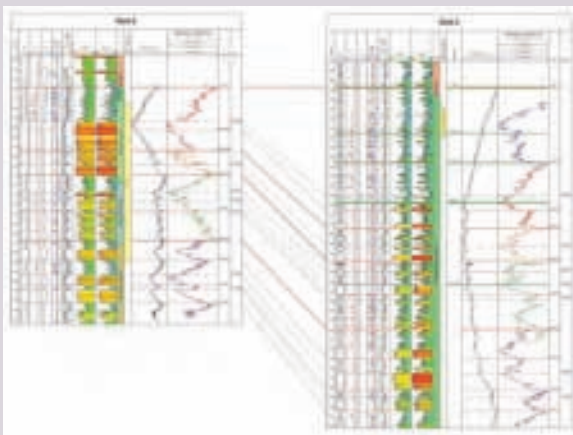
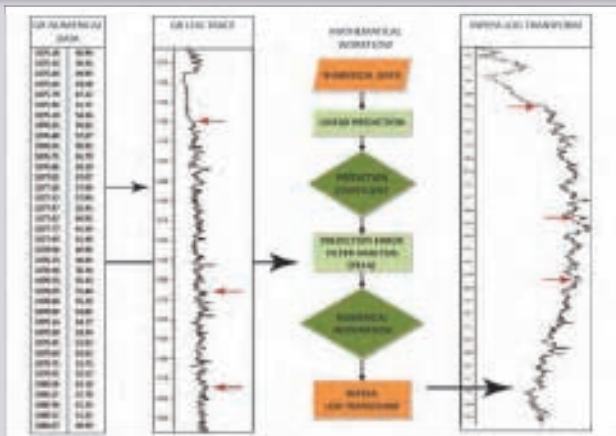
*Innovative Technology Data-Driven Analysis
Smart Well Correlation Routines
Reducing Uncertainty in Well Correlations
Fast Results and Cost Effective*

ENRES approach to the interpretation of well logs requires more than the usual functions of log formatting, manipulation and display. Therefore, we have developed our own purpose-built software called CycloLog. CycloLog is a highly sophisticated toolkit that provides the user with a large range of advanced functions in addition to ENRES unique INPEFA Log Transform routines. Despite its apparently specialised nature, CycloLog is extremely user-friendly

INPEFA Log Transform

Data-driven downhole prediction of stratigraphic surfaces and depositional trends using numerical GR log data

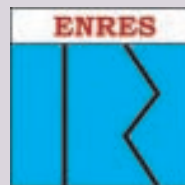
The INPEFA Log Transform can also be applied to other well log data, enabling the user to an in-depth geological interpretation



more value from your logs

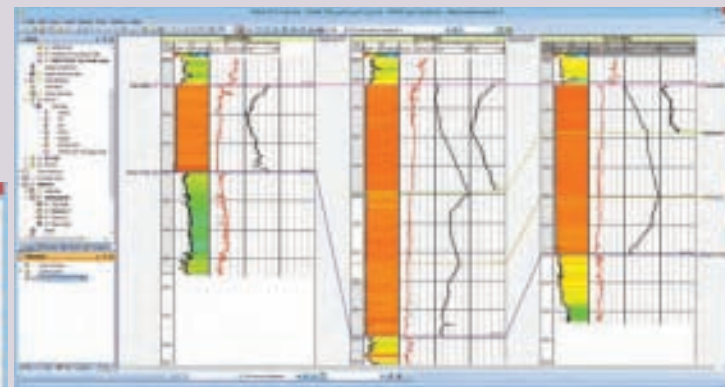
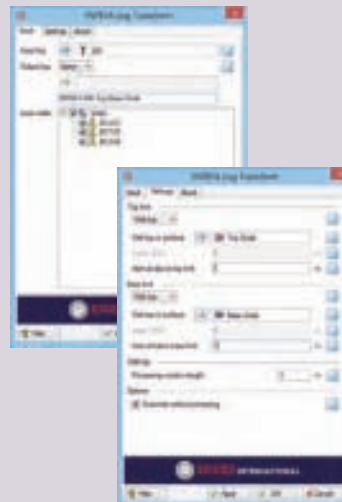
- > fast informative log display
- > data QC and log editing
- > high-resolution regional correlations
- > detailed reservoir correlations
- > reservoir evaluations
- > identify key bounding surfaces
- > tie wells to seismic
- > advanced applications

Ask for a trial version - sales@enresinternational.com



INPEFA Log Transform Plugin in Petrel Release March 2014

Multi-well correlation using the unique INPEFA Log Transform routine in Petrel



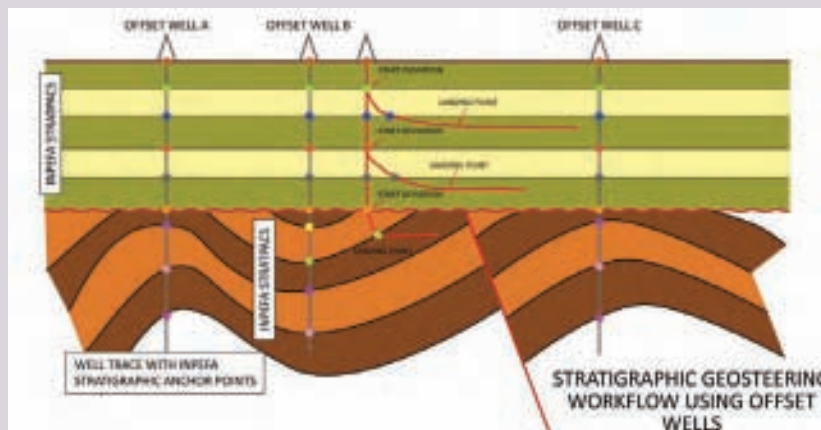
Fast multi-well correlation within the Petrel suite

Petrel is mark of Schlumberger
INPEFA is mark of ENRES



Real Time Stratigraphy In Development

A new and unique software for well placement

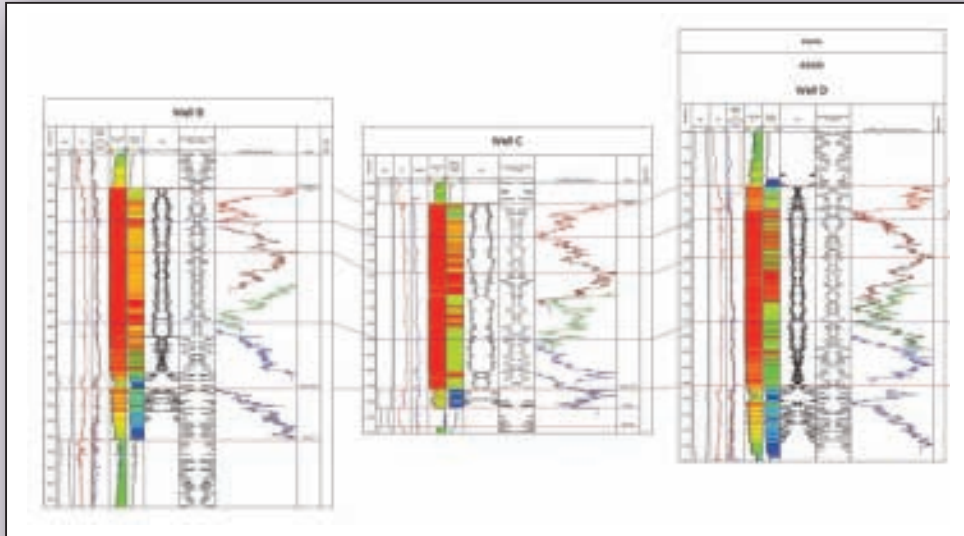




solutions in petroleum geoscience

Subsurface Stratigraphic Modelling

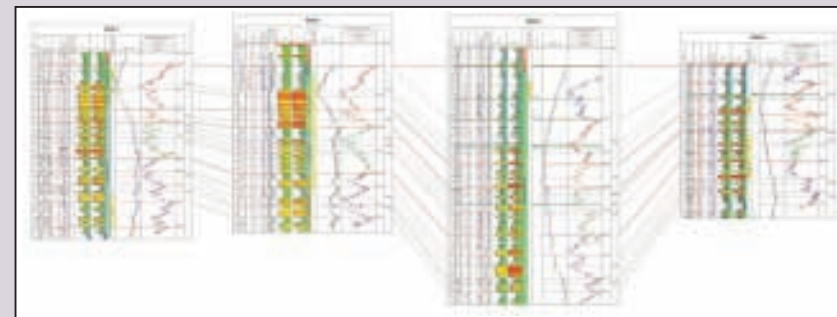
Alternative Stratigraphic Correlation Techniques



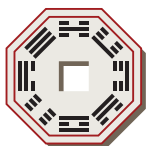
High-Resolution Stratigraphic Correlation - Chalk Sequences

**MATURE HYDROCARBON
REGIONS / FIELDS**

**RESERVOIR EVALUATION OF
UNCONVENTIONAL HYDROCARBON
RESOURCES**



ENRES
INTERNATIONAL



ENRES INTERNATIONAL

Euclideslaan 201
3584 BS Utrecht
Netherlands

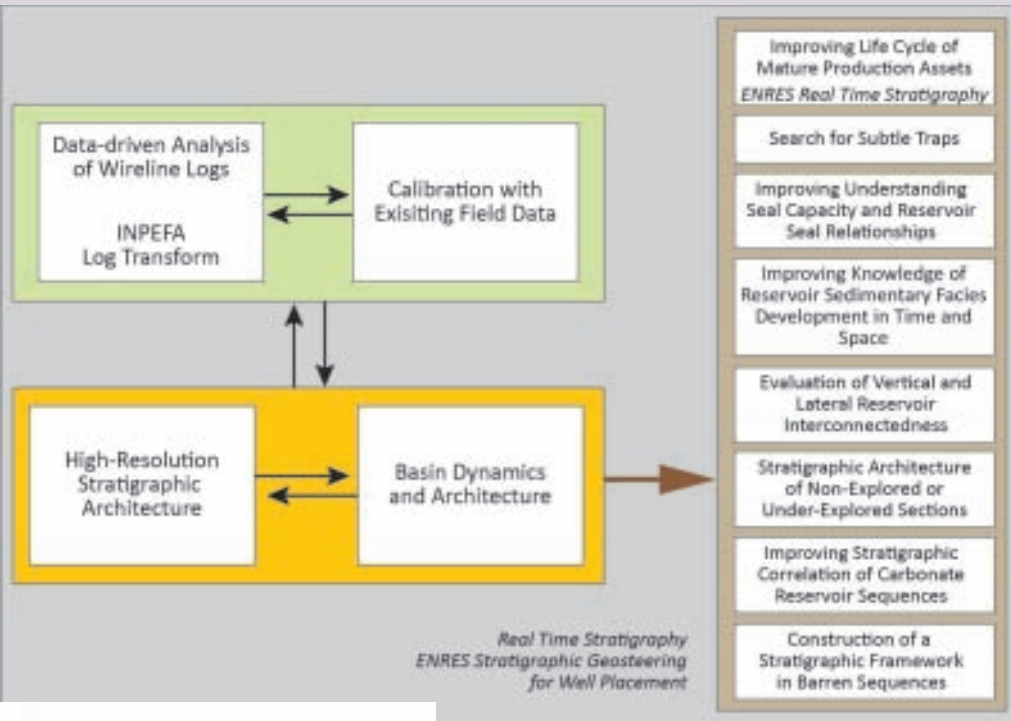
E: sales@enresinternational.com
W: www.enresinternational.com

Alternative Stratigraphic Correlation Techniques - Mature Hydrocarbon Fields



www.enresinternational.com

As oil and gas exploration and production are moving towards more mature phases, innovative new concepts and tools are needed in petroleum geoscience. In this context, stratigraphic methods must increasingly contribute to the construction of a more accurate and detailed high-resolution stratigraphic correlation framework. We have developed an innovative and unique tool (INPEFA Log Transform routines) for carrying out data-driven stratigraphic analyses of well logs and at the same time developed a special workflow for studies in mature fields.



Outcrop Analogue Modelling of Fluvial Reservoirs

Alternative Stratigraphic Correlation Techniques - Unconventional Resources

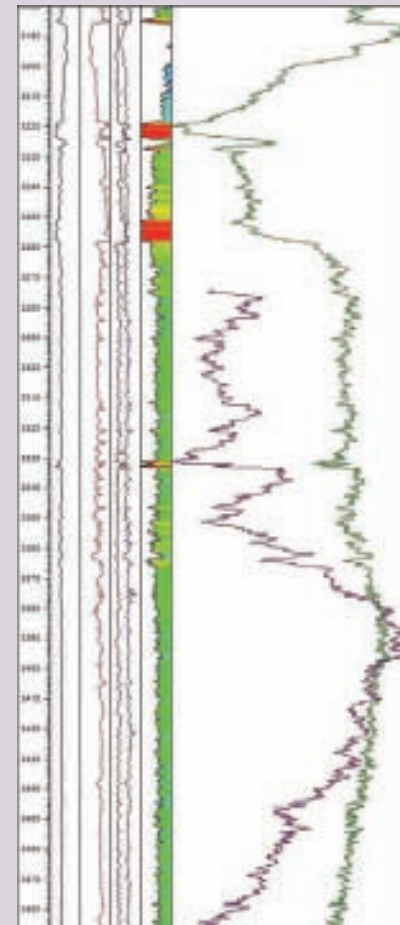


www.enresinternational.com

Better knowledge of the stratigraphic architecture and innovative approaches in well placement techniques will enhance the production of unconventional resources. Our workflow approach contributes in an important way to the construction of a high-resolution correlation framework of complicated and uniform rock sequences (e.g., thick shale sequences). Our well placement software (Real Time Stratigraphy) is being developed and will enable an accurate stratigraphic geosteering, facilitating a more precise deviation and landing.

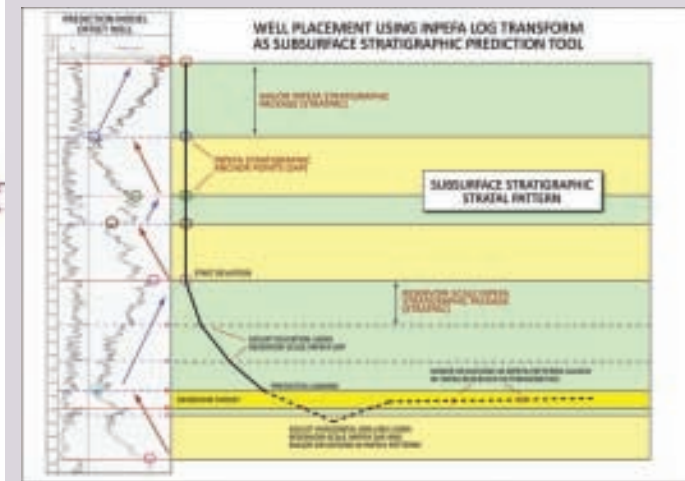
Shale Reservoirs
Tight Reservoirs
Coal/bed Methane

INPEFA Log Transform of Shale Reservoirs



CycloLog RTS
REAL TIME STRATIGRAPHY

For Optimizing Well Placement

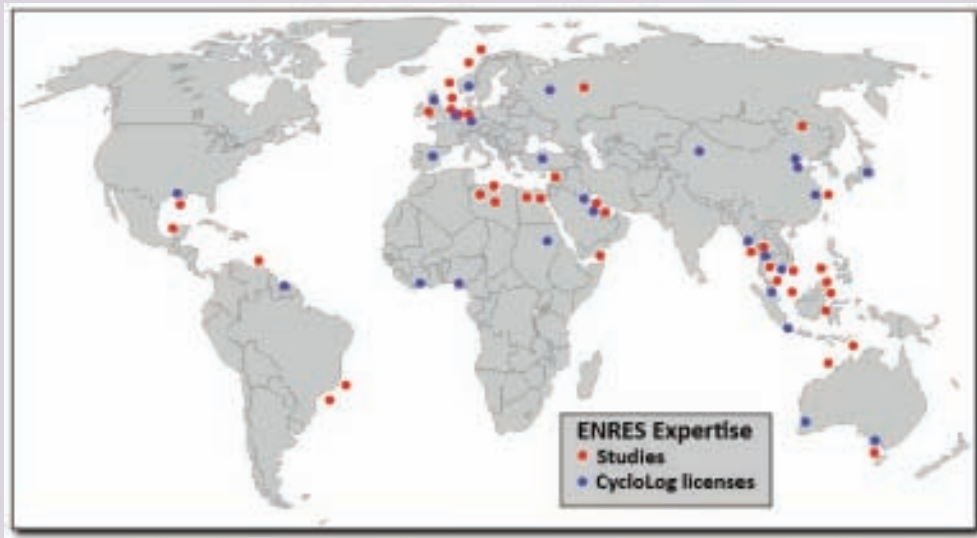




solutions in petroleum geoscience

Company Activity Overview

ENRES Expertise in the World



**Petroleum Geological Software
Consultancy Services**

Mature Hydrocarbon Fields

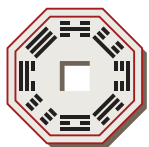
Unconventional Resources

Special Courses and Workshops

Field Seminars

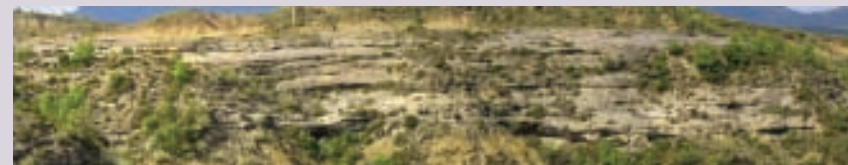
Research and Development

ENRES
INTERNATIONAL



ENRES INTERNATIONAL

Euclideslaan 201
3584 BS Utrecht
Netherlands
E: sales@enresinternational.com
W: www.enresinternational.com





History

With our roots firmly attached in geoscience academics, ENRES International was founded in 1987. The company originated from the insight that an innovative, objective approach in well log analysis and interpretation was essential to improve subsurface stratigraphic models. Today ENRES International is a globally active petroleum consultant with a customer base including corporations, governments and academic institutions. Using our unique approach, we focus on solving the stratigraphic and petroleum geological challenges that our clients are facing.

Petroleum Geological Software

Reducing uncertainty in Subsurface Stratigraphic Modelling



The most complete wireline log analysis tool for petroleum geologists and unique well correlation software



INPEFA Log Transform plugin in Petrel
Facilitating well correlations in the Petrel working environment

New software in development for real time stratigraphic positioning



CycloLog Real Time Stratigraphy (RTS) is a unique software solution for stratigraphic positioning of a Bottom Hole Assembly (BHA) while drilling



Key Products and Services

The foundation of ENRES International's success is its unique and innovative approach in well log analysis. This approach consists of a data-driven analysis of well log data in the construction of the INPEFA Log Transform. This approach is able to predict and determine stratigraphic or geologic events and depositional trends that are generally not distinguishable in the original well log, but essential for resolving stratigraphic challenges such as the construction of a consistent and accurate stratigraphic framework. The INPEFA Log Transform will also be integrated in our well placement software (Real Time Stratigraphy) which is now in development.

Consultancy Services

Specially developed workflow and purpose-built software in stratigraphic and geological analysis of **mature hydrocarbon fields and unconventional resources**

Courses / Workshops

- > Core Interpretation Essentials: Characteristics of Primary Sedimentary Structures in Common Sliciclastic Systems
- > Interpretation Essentials: Characteristics of Primary Sedimentary Structures in Common Sliciclastic Systems

Field Seminar

Outcrop Analogues of Fluvial and Tide-Influenced Reservoirs
Tresp-Graus and Ebro Basins, South-Central Pyrenees, Spain

Research and Development

Go to our website to download our publications and open file publications

Courses, workshops and field seminar - for all information, please go to our website - www.enresinternational.com